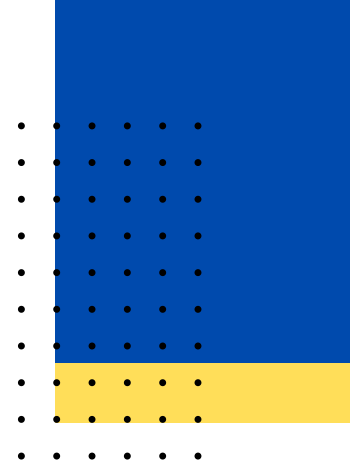


COMPANY PROFILE

www.flowtechinfra.com

TABLE OF CONTENT



01. Company Overview

02. Our Process

03. Company Values

04. What We Do

05. Company Chart

06. Business Overview

07. Projects & Clients

08. Management Team



COMPANY OVERVIEW

About Us

FlowTech Infra (FI) has been serving the MEP works, with more than 50 employees, 200+ workforce and efficiently managed service, and all this with the price you need to get the job done in time, Quality, Speed & Safety are the trademarks of FlowTech Infra.

As an organization, we firmly believe in the principle of “Employee first” and that the “employee is an asset to the company”.

OUR PROCESS

Mission

To create and promote Best Engineering Construction Practices, through cost-efficient and timely delivery of the best Quality Products and Solutions to our customers' delight engineered to precision and perfection. To become the most preferred SOLUTION PROVIDER Engineering Company.

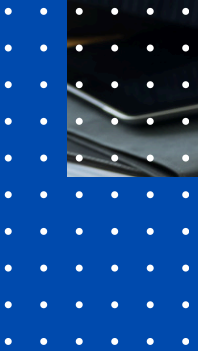
Vision

Within the next decade, we want to be recognized as one of the most reliable Construction Engineering company across the nation in providing cost-effective, unmatched Construction Quality & setting a benchmark in Project management. Our focus is Quality workmanship, speed, Performance, and Growth



COMPANY VALUES

- Client Satisfaction
- No Compromise in Quality Honour
- Commitments Transparency
- Belief in Good Business
- Ethics
- Positive Attitude
- Speed in Action



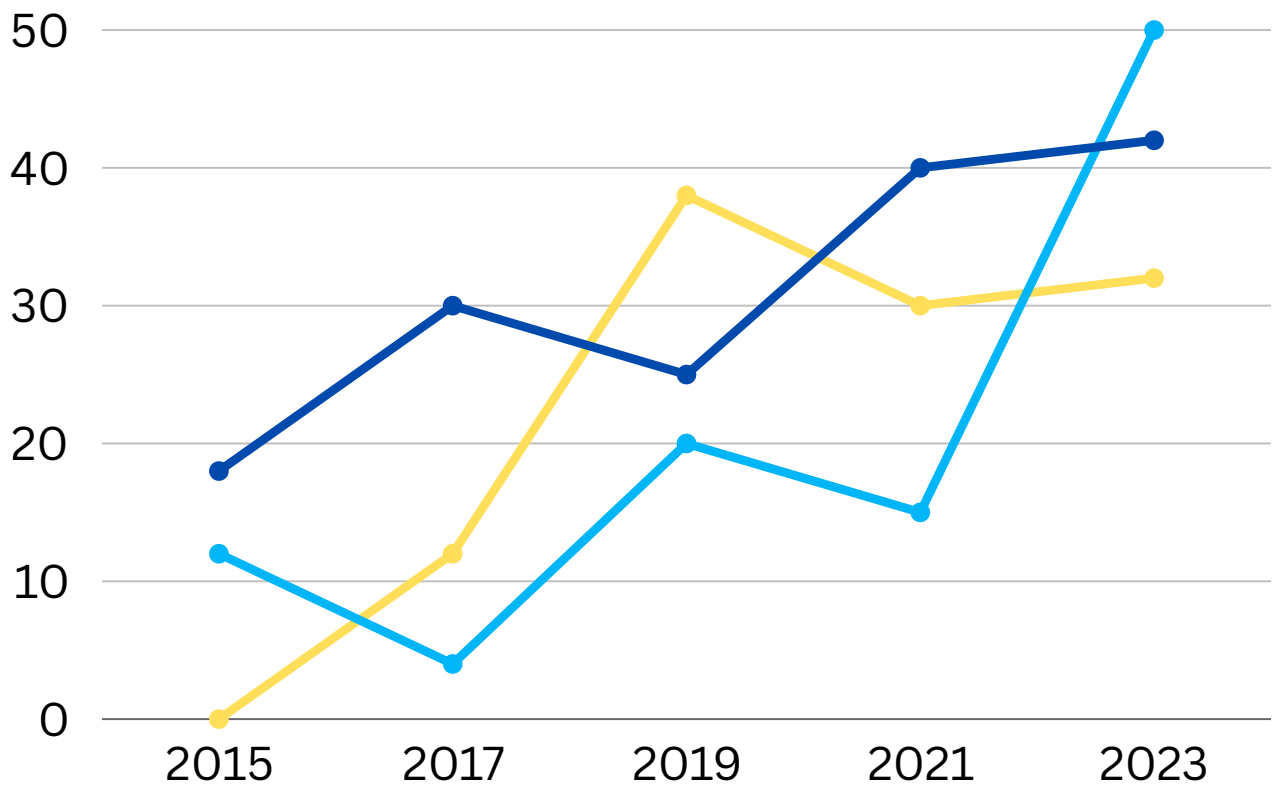


WHAT WE DO

- We are a professional MEP Engineering Team started with a strong base of experienced Engineers. Our services include Plumbing, Electrical, & Fire Protection and Infra Structure works. We have vast experience working with all aspects of Mechanical, Electrical, and Plumbing (MEP) services.
- We have a unique approach to satisfy the customer needs of each project and it is the specialty of our service.
- In addition to maintaining leadership in the Construction industry, we are committed to increasing our market share in other sectors through strategic alliances with national and internationally reputed companies.

COMPANY CHART

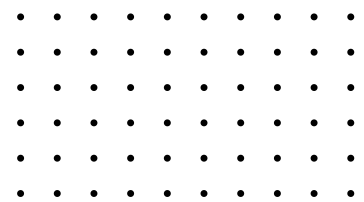
Year-on-year (YoY) company growth charts are indispensable tools for assessing the overall health and trajectory of a business. These charts provide a visual representation of a company's performance over consecutive years, offering valuable insights into its financial stability, market position, and strategic effectiveness.



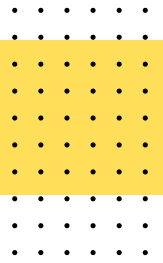
■ Customer Satisfaction

■ Financial Stability

■ Market Position



BUSINESS OVERVIEW



Core Values

At **FlowTech Infra**, our core values are the bedrock of our identity. They guide our decisions, actions, and interactions, defining who we are and what we stand for. These values are not just words on paper; they are the heartbeat of our organization, shaping our culture and driving our success.



Partners

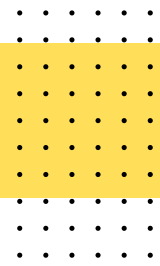
We believe in the power of collaboration. We foster an inclusive and supportive environment where diverse perspectives are valued. By working together as a unified team—both internally and with our clients—we achieve greater success and drive positive change.



Excellence

We strive for excellence in every aspect of our work. From the quality of our products and services to the professionalism of our interactions, we set high standards and continuously raise the bar. We take pride in delivering outcomes that demonstrate our commitment to excellence.

PROJECTS & CLIENTS



OUR PROJECTS

01	SHYAM AVINANDAN	-(55 LAKH)
02	ASSETZ HERE & NOW	-(22 LAKH)
03	ASSETZ EARTH&ESSENCE	-(48 LAKH)
04	AMS MK FASTNER PROJECT	-(19 LAKH)
05	PRESTIGE FOREST	-(48 LAKH)
06	BRIGADE ELDORADO JASPER	-(70 LAKH)
07	SHYAM ZOTRA	-(62 LAKH)
08	LIFE HOSPITAL	-(29.5 LAKH)
09	KOAN HOUSE	-(52.4 LAKH)
10	MANNAT HOUSE	-(32.4 LAKH)
11	MR. SUNDRESH HOUSE	-(41.5 LAKH)
12	VAISHNAVI LIFE CLUB HOUSE	-(35 LAKH)
13	ETC.	

OUR CLIENTS

01	SHYAM DEVELOPER
02	SVDI
03	BRIGADE
04	PRESTIGE
05	AMS DEVELOPER
06	ASSETZ
07	VASNAVI LIFE STYLE
08	ENSEMBLE INFRASTRUCTURE INDIA LTD

MANAGEMENT TEAM

At **FlowTech Infra**, our success is propelled by a dynamic and experienced management team dedicated to steering our organization toward new heights. Each member of our leadership brings a unique set of skills, industry knowledge, and a shared commitment to realizing our company's vision.



Debasish Rout

Managing Director
Execution Head PHE & FPS)



Siddharth Biswal

Managing Director
Tendering & Contracts
(PHE & FPS)



Pravash Mallick

Director - Projects (ELE)
Tendering & Contracts
(ELE)

FLOWTECH INFRA | 
Engineers & Contractor

**FLOWTECH
INFRA**

New Bayapanahalli , Indranagar 560036

admin@flowtechinfra.com

www.flowtechinfra.com